

Introducing AMPRO TECH

Automotive, E-Rickshaw and Inverter battery manufacturing company located in Pune, India with Production capacity of 25000 Batteries per month





With an initial investment of over INR 20 Cr, STPL has put up a brand-new manufacturing facility with the latest automatic machineries to manufacture Tubular and Automotive range of batteries.

Situated in Chakan, near Pune, the fresh new plant brings a whole new enthusiasm to achieve its vision.

The team manifests passion, and extend their wisdom

FEATURES:

- Complete Sealed Design
- Maintenance free
- Powerful Recovery Ability
- Long Life Cycle
- Specially designed for working in all climates



Manufacturing Facility



BATTERY STRUCTURE



- X Frame Grid Technology
- Grid protection technology
- Enveloped separator for low electric resistance
- Advance centre lug technology and cast on strap
- Sealed double lid with frame arrestor
- Integrated computer design and reinforced container
- Magic eye indicator



Automotive Batteries

Smart looking range of products are tough to the core, holds unmatched strength

Complete range of Products

- Car Batteries
- Tractor & tillers
- Truck & Buses
- Generators & locomotive



Hcv Car Suv Lcv Tractor

We are committed to provide excellent product, good service, lowest maintenance cost and highest durability amongst other parallel products available in market



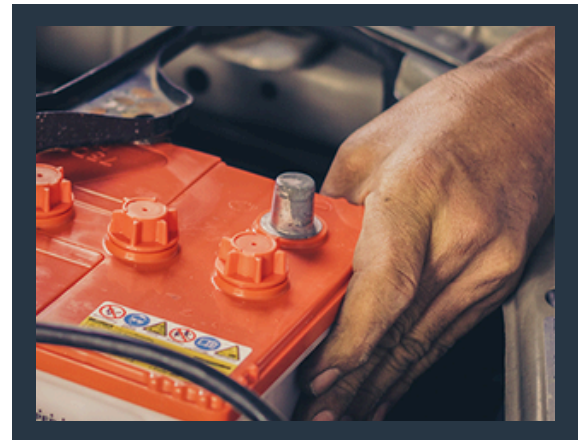
Excellent Cranking
Power & Reliability



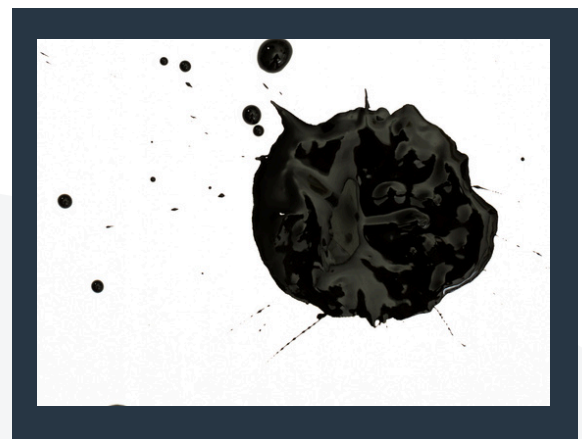
Advanced Technology



Maintenance-Free



Spill-Proof Design



AMPRO TECH offers a range of affordable, low-maintenance batteries for cars and SUVs. These high-performance batteries make the drive completely free of worries

Technical Specification – Automotive Batteries



| Model | Capacity @ C20 | Container | Battery Dimension L*W*CH*TH(in mm) | Filled Wt (Kgs) | Recomonded Warranty |
|--------|----------------|-----------|------------------------------------|-----------------|---------------------|
| NS40 | 32AH | NS40 | 195 x 130 x205 x225 | 9.5 | |
| NS40ZR | 35AH | NS40 | 195 x 130 x205 x225 | 11.0 | 18 Months |
| NS40ZL | 35AH | NS40 | 195 x 130 x205 x225 | 11.0 | 18 Months |
| N50L | 50Ah | N50 | 195 x 130 x205 x225 | 16.0 | 18 Months |
| N600R | 60AH | N50 | 260 x 170 x 205 x 227 | 17.0 | 18 Months |
| N600L | 60AH | N50 | 260 x 170 x 205 x 227 | 17.0 | 18 Months |
| N700L | 65AH | N50 | 260 x 170 x 205 x 227 | 18.5 | 18 Months |
| N700R | 65AH | N50 | 260 x 170 x 205 x 227 | 18.5 | 18 Months |
| N750R | 75AH | N70 | 305 x 170 x 205 x 227 | 20.0 | 18 Months |
| N800R | 80AH | N70 | 305 x 170 x 205 x 227 | 22.0 | 18 Months |
| N88 | 88AH | N100 | 410 x 174 x 212 x 239 | 27.5 | 18 Months |
| N100 | 100AH | N100 | 410 x 174 x 212 x 239 | 29.5 | 18 Months |
| N120 | 120AH | N120 | 510 x 182 x 212 x 235 | 34.5 | 18 Months |
| N130 | 130AH | N120 | 510 x 182 x 212 x 235 | 37.0 | 18 Months |
| N150 | 150AH | N150 | 505 x 220 x 212 x 235 | 40.5 | 18 Months |
| N180 | 180AH | N180 | 518 x 275 x 217 x240 | 51.5 | 18 Months |



Inverter Batteries

Advanced Hybrid Technology Robust and pullproof Design & in-house testing & validation process gives an assurance of the product performance.

Additional to this product designed with attached looks & visibility to make the first step in the market.

- **Short Tubular Batteries**
- **Jumbo Tubular Batteries**
- **Tall Tubular Batteries**
- **Tubular Batteries**



INVERTER

SOLAR

UPS





Suitable for long and frequent power outages

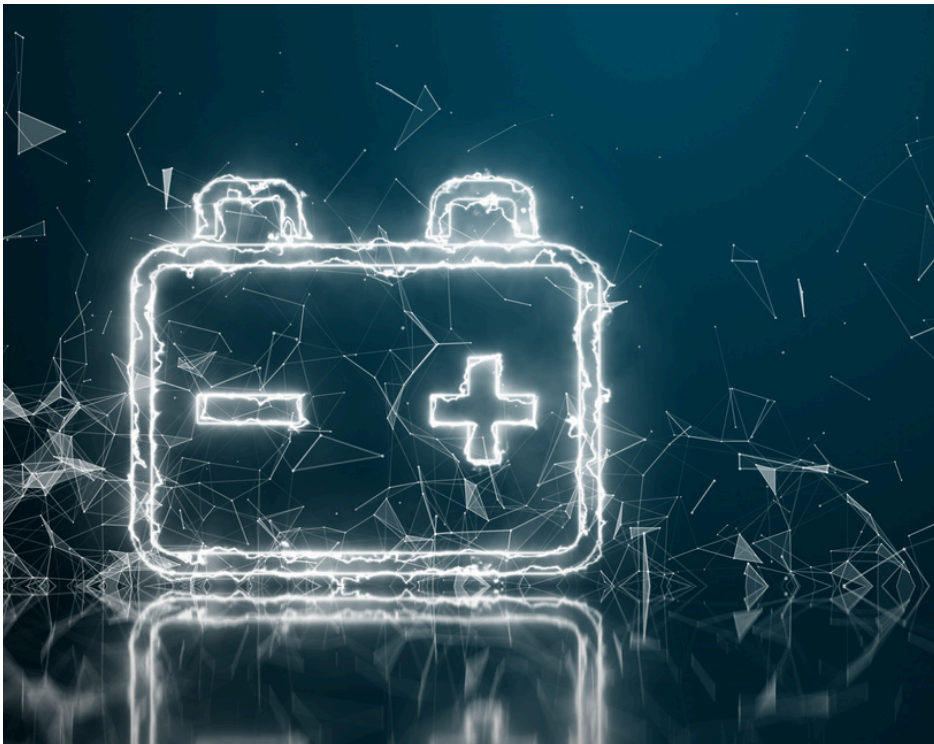


Higher acid volume/
Ampere-Hour



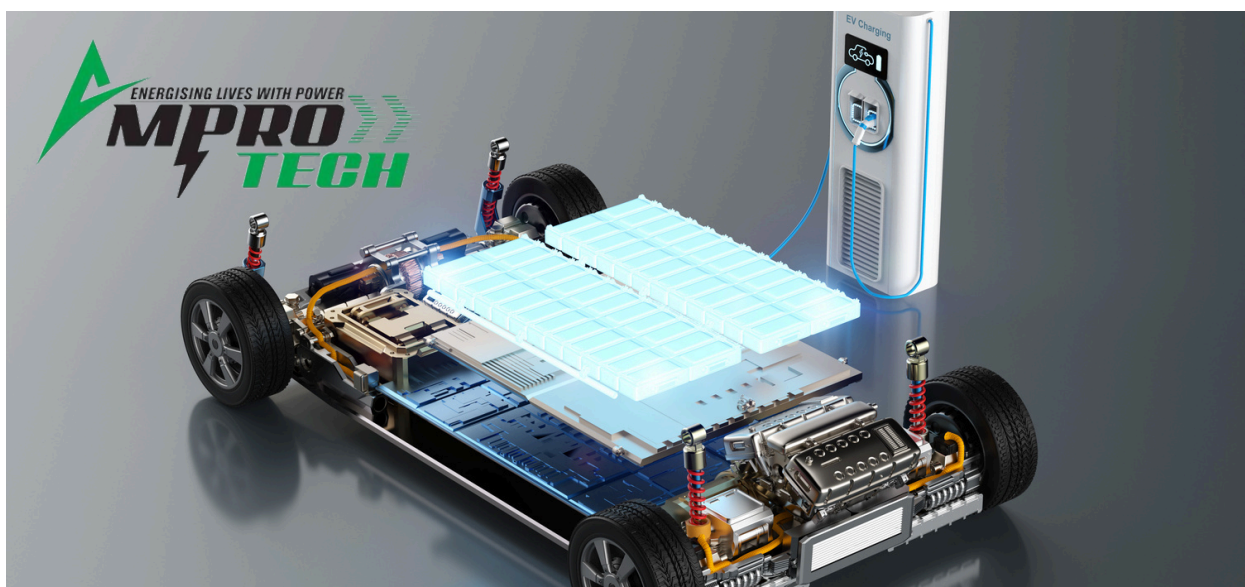
AMPRO TECH – Product Ranges are as below Short & Jumbo Tubular batteries

| Capacity & Backup | | | | Plate Details | | | | | Weight Details | | | | |
|-------------------|-----------|----------------|-------------------|-------------------|--------------|--------------------------|--------------|--------------------------|----------------|-------------|-------------|------------------------|---------------------|
| Selenide Model | Container | Capacity @ C20 | Backup @ 400 Watt | Plate Combination | Plate Length | Positive Plate Tube Size | No Of Spines | Negative Plate thickness | Dry Weight | Lead Weight | Acid Weight | Weight Without Packing | Weight With Packing |
| S1 | N 150 J | 100 Ah | 1 Hr 45 Min | 3 + 4 | 125 mm | 7.3 mm | 17 | 3.2 mm | 22.50 | 16.70 | 22.00 | 44.50 | 45.90 |
| S2 | N 150 J | 120 Ah | 2 Hr 05 Min | 3 + 4 | 150 mm | 7.3 mm | 17 | 3.2 mm | 24.50 | 18.40 | 21.50 | 46.00 | 47.00 |
| S3 | N 150 J | 135 Ah | 2 Hr 25 Min | 4 + 5 | 125 mm | 7.3 mm | 17 | 3.2 mm | 26.00 | 19.80 | 21.00 | 47.00 | 48.00 |
| J1 | N 200 J | 100 Ah | 2 Hr 45 Min | 4 + 5 | 125 mm | 7.3 mm | 17 | 3.2 mm | 23.50 | 19.80 | 25.00 | 48.50 | 49.50 |
| J2 | N 200 J | 135 Ah | 2 Hr 25 Min | 4 + 5 | 125 mm | 7.3 mm | 17 | 3.2 mm | 26.50 | 19.80 | 25.00 | 51.50 | 52.50 |
| J3 | N 200 J | 150 Ah | 3 Hr 00 min | 4 + 5 | 150 mm | 7.3 mm | 17 | 3.2 mm | 29.50 | 23.40 | 24.50 | 54.00 | 55.00 |
| J4 | N 200 J | 180 Ah | 3 Hr 30 Min | 5 + 6 | 150 mm | 7.3 mm | 17 | 3.2 mm | 33.50 | 28.80 | 24.00 | 57.50 | 58.50 |
| J5 | N 200 J | 210 Ah | 4 Hr 00 Min | 6 + 7 | 150 mm | 7.3 mm | 17 | 3.2 mm | 38.50 | 34.30 | 24.00 | 62.50 | 63.50 |



AMPRO TECH – Product Ranges are as below Automotive Batteries

| Capacity & Backup | | | | Plate Details | | | | | details |
|-------------------|-----------|----------------|-----------------------|-------------------|--------------|-------------|--------------------------|--------------------------|--------------|
| Selenide Model | Container | Capacity @ C20 | CCA / Capacity Rating | Plate Combination | Plate Length | Plate Width | Positive Plate Thickness | Negative Plate thickness | Weight in Kg |
| NS40 | NS40 | 32AH | | 4 + 4 | 125 mm | 108 mm | 1.9 mm | 1.5 mm | 9.5 |
| NS40ZR | NS40 | 35AH | | 4 + 5 | 125 mm | 108 mm | 1.9 mm | 1.5 mm | 11.0 |
| NS40ZL | NS40 | 35AH | | 4 + 5 | 125 mm | 108 mm | 1.9 mm | 1.5 mm | 11.0 |
| N50L | N50 | 50Ah | | 4 + 4 | 125 mm | 143 mm | 1.9 mm | 1.5 mm | 16.0 |
| N600R | N50 | 60AH | | 4 + 5 | 125 mm | 143 mm | 1.9 mm | 1.5 mm | 17.0 |
| N600L | N50 | 60AH | | 4 + 5 | 125 mm | 143 mm | 1.9 mm | 1.5 mm | 17.0 |
| N700L | N50 | 65AH | | 5 + 5 | 125 mm | 143 mm | 1.9 mm | 1.5 mm | 18.5 |
| N700R | N50 | 65AH | | 5 + 5 | 125 mm | 143 mm | 1.9 mm | 1.5 mm | 18.5 |
| N750R | N70 | 75AH | | 5 + 6 | 125 mm | 143 mm | 1.9 mm | 1.5 mm | 20.0 |
| N800R | N70 | 80AH | | 5 + 6 | 125 mm | 143 mm | 1.9 mm | 1.5 mm | 22.0 |
| N88 | N100 | 88AH | | 6 + 7 | 125 mm | 143 mm | 1.9 mm | 1.5 mm | 27.5 |
| N100 | N100 | 100AH | | 7 + 8 | 125 mm | 143 mm | 1.9 mm | 1.5 mm | 29.5 |
| N120 | N120 | 120AH | | 8 + 9 | 125 mm | 143 mm | 1.9 mm | 1.5 mm | 34.5 |
| N130 | N120 | 130AH | | 9 + 10 | 125 mm | 143 mm | 1.9 mm | 1.5 mm | 37.0 |
| N150 | N150 | 150AH | | 10 + 11 | 125 mm | 143 mm | 1.9 mm | 1.5 mm | 40.5 |
| N180 | N180 | 180AH | | 11 + 12 | 125 mm | 143 mm | 1.9 mm | 1.5 mm | 51.5 |
| N200 | N180 | 200AH | | 12 + 13 | 125 mm | 143 mm | 1.9 mm | 1.5 mm | 51.5 |





Promising a good battery!

AMPRO TECH Invites you to visit the factory along with your team.

- Factory Set up,
- products range and
- Testing facilities built to ensure the Quality.
- Finally commercials of the products

Factory Location:

🌐 AMPRO TECH

✉ info@amprotechexim.com

☎ 9975700436

📍 695, Bose Village, Chakan Shikrapur Road,
Chakan –Pune- 410501





Thank you